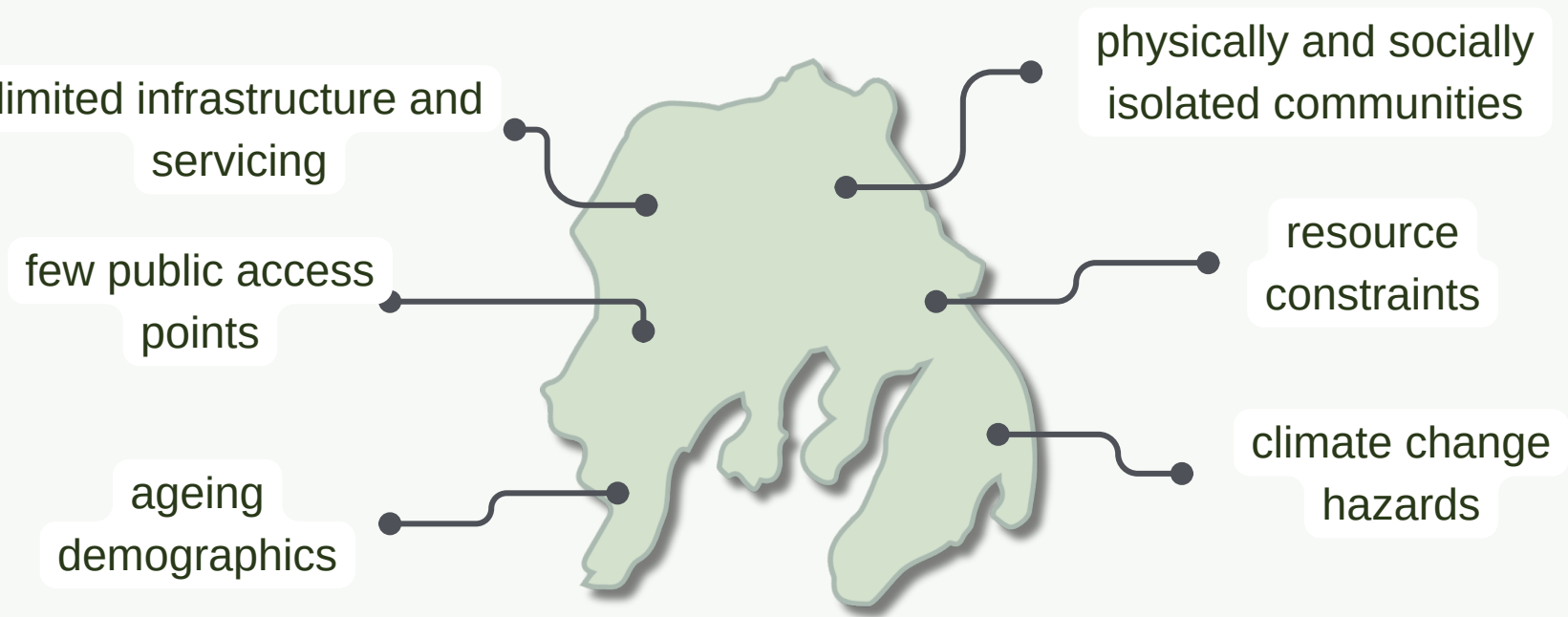


Promoting Livability on Chá7elkwnech | Gambier Island

In partnership with
Gambier Island Community Association

PROJECT CONTEXT

Living on Gambier Island is about reconnecting with nature, bonding with loved ones, and being in community. While the Island is located only 30km from Downtown Vancouver, residents experience unique challenges due to:



PROJECT OBJECTIVES

- 1

Identify major needs, aspirations, and priorities related to livability
- 2

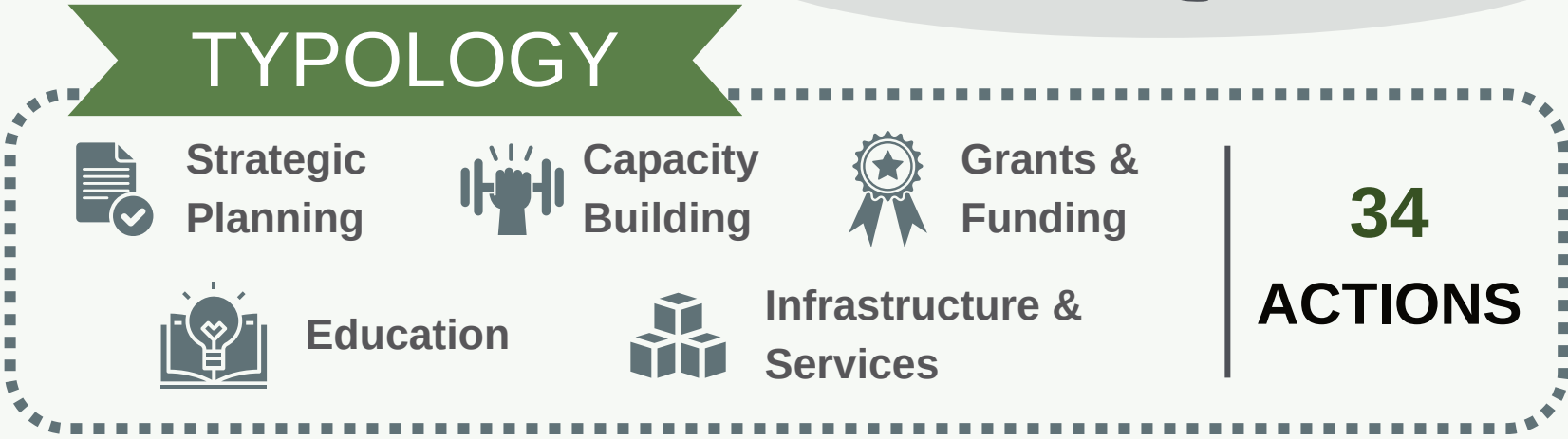
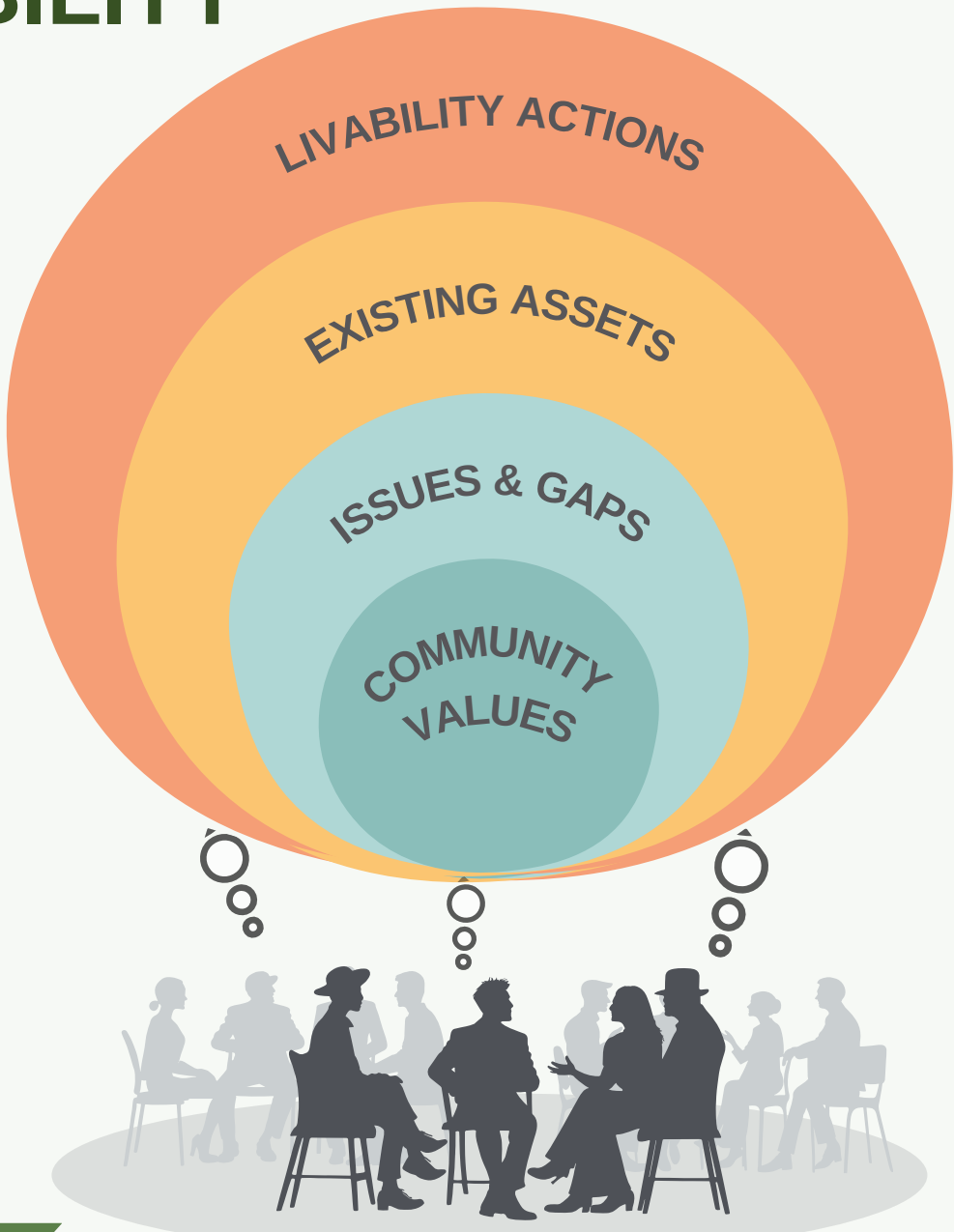
Provide a strategic path forward that guides decision-making

FRAMING LIVABILITY

Livability is a place-based concept.

The project unpacked how the residents perceive and envision livability, piecing together a **layered understanding** of this overarching goal.

Pathways towards livability are proposed using **34 issue-specific actions**, organized through the following typology.



PATHWAYS TOWARDS LIVABILITY

ACTION MAPPING

